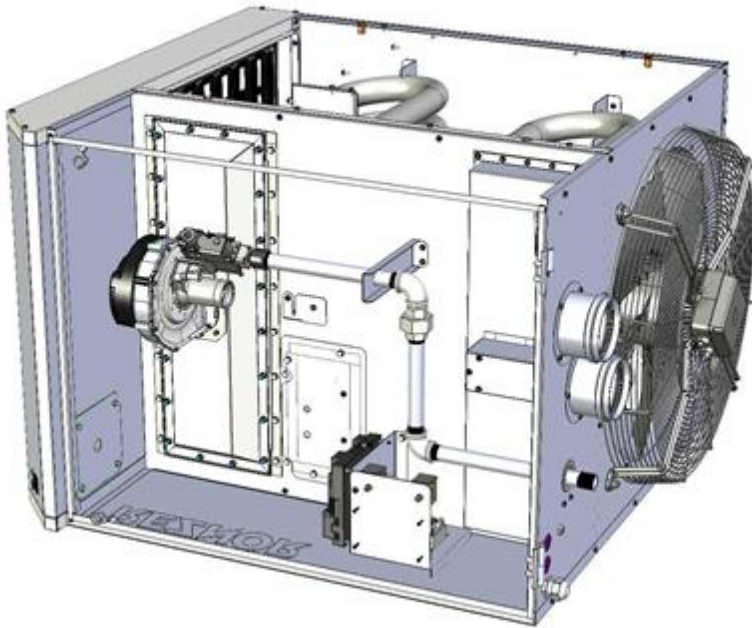


Technical Data



Enhanced Reliability & Safety

Heat Exchanger
Manufactured from aluminised steel

Air Flow
High capacity axial flow fan

Burner
Fully premixed with multi-try ignition

Dual Limitstats
Provide additional safety

Model	UPSA	30	70	90	115	150	200	225	250	330	410
Combustion Air and Flue Type		B23 / B53 / C13 / C33 / C53									
Heat Output High Fire	kW	9.34	18.39	26.54	31.68	42.24	53.46	63.59	71.25	97.87	120.16
Gas Consumption High Fire (HS) G20	m ³ /h	1.07	2.14	3.08	3.69	4.91	6.17	7.37	8.19	11.33	13.71
Gas Connection	BSP	½"			¾"						1"
Airflow	m ³ /h	1223	2533	3035	4120	4562	5877	7125	8681	10350	17552
Horizontal Throw	m	10	16	26	27	26	32	32	36	36	36
Noise Level	dBA	46	48	49	51	51	51	56	59	60	62
Minimum mounting height	m	2.5									
Recommended mounting height	m	3.0			4.0						4.0 - 5.0
Total Electrical Rating	W	145	150	256	550	550	690	820	1000	1040	1900
Electrical Connection		230V / 1N / 50Hz									
Protection Grade	IP	IP20									
Net weight	Kg	43	63	58	89	99	121	122	135	168	258